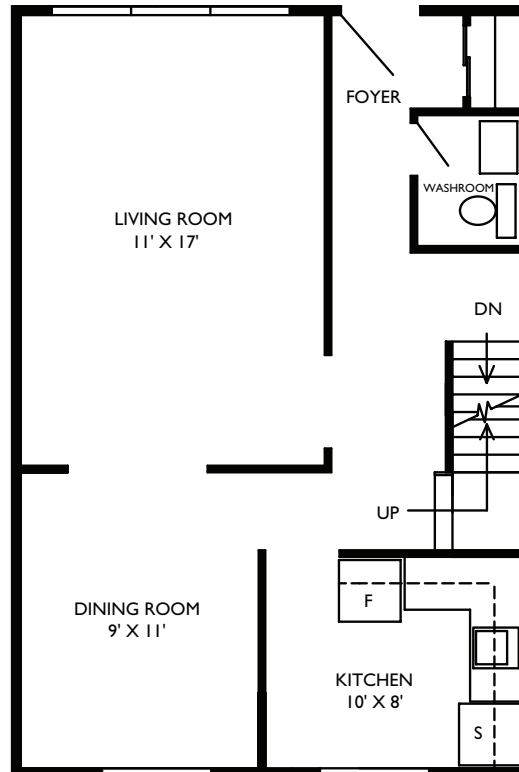
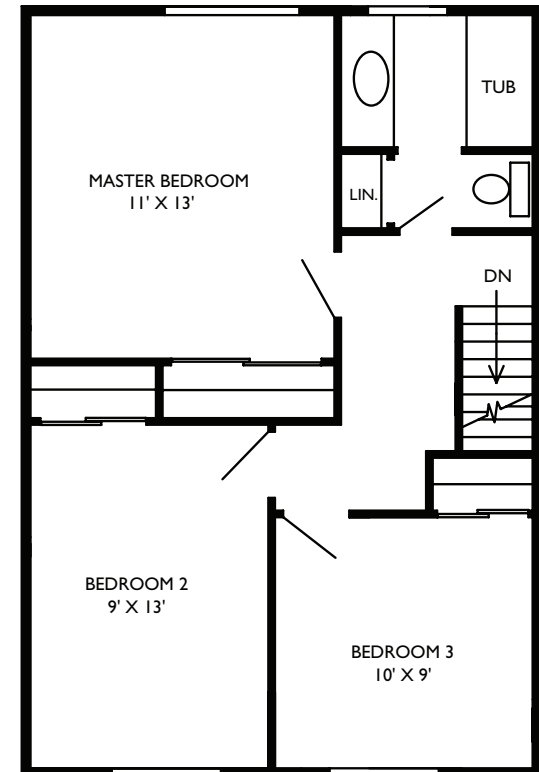


BASEMENT FLOOR



GROUND FLOOR



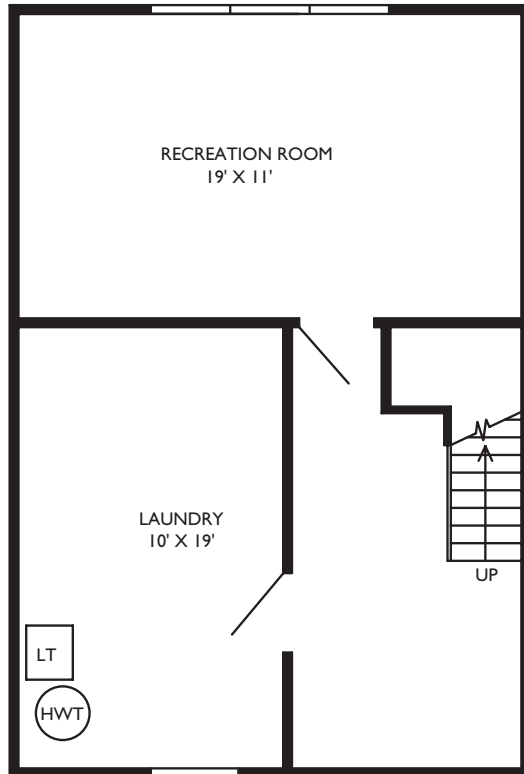
SECOND FLOOR

Three Bedroom Type "A"

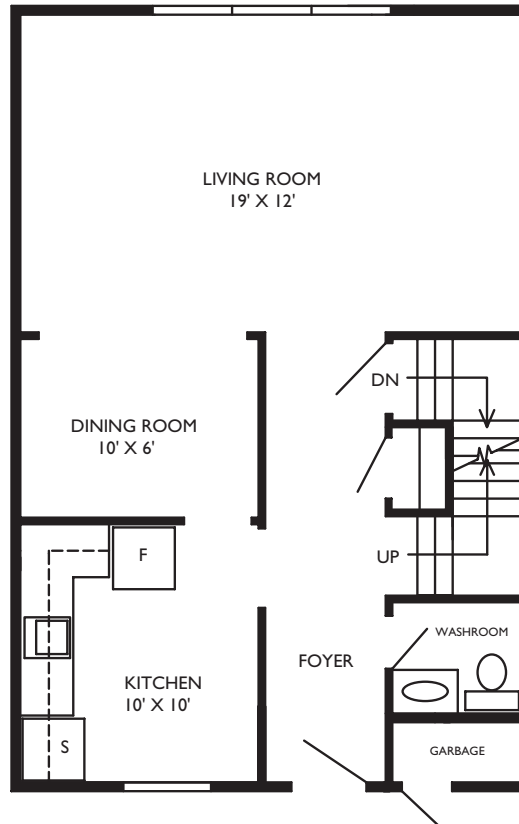
1285 Sq.Ft approx.

520 ROSSLAND PARK TOWNHOUSES

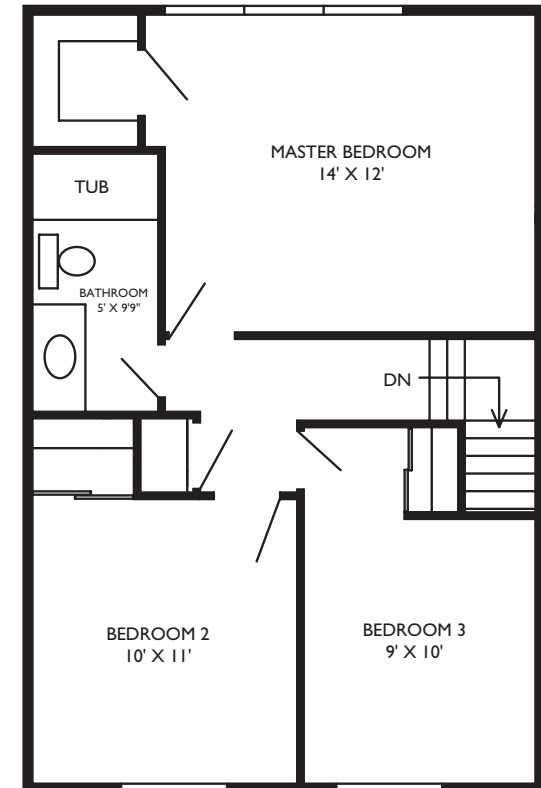




BASEMENT FLOOR



GROUND FLOOR



SECOND FLOOR

Three Bedroom Type "B"

1285 Sq.Ft approx.

520 ROSSLAND PARK TOWNHOUSES

